

人生地不熟・一問解千愁  
New Information Stations-Enjoy friendly experiences

借問站  
INFORMATION  
STATION

Welcome to  
Miaoli



交通聯絡資訊  
Traffic information

◎苗栗火車站 037-260031 ( 服務時間：06:00-24:00)  
免付費服務電話 0800-765888  
Miaoli Railway Station 037-260031 (business hours: 6:00am-12:00am)  
toll-free service number:0800-765888

◎三義火車站 037-874763  
Sanyi Railway Station 037-874763

◎竹南火車站 037-472030  
Zhunan Railway Station 037-472030

◎亦捷科際整合股份有限公司 02-27606069  
苗栗總站服務電話 0979-667293  
YiJet Bus 02-27606069  
Miaoli Headquarter 0979-667293

◎苗栗客運 037-662111#3  
Miaoli Bus 037-662111#3

◎公車時刻最新資訊請詳閱：  
https://www.taiwanbus.tw/ 或  
下載公路總局 iBus 公路客運 app  
Please visit https://www.taiwanbus.tw/  
for the updated bus schedule or download iBus Application.



苗栗文化觀光  
旅遊網



f 苗栗玩透透



交通部觀光署  
借問站

交通部觀光署  
Tourism Administration, MOTC

苗栗縣政府文化觀光局  
Culture and Tourism Bureau, Miaoli County

24 小時免付費旅遊諮詢服務熱線 0800-011765  
24HR toll-free travel information hotline: 0800-011765

廣告  
經文交廣字第 158 號



番社 30( 陳家古厝 )  
huansia30



阿財米食 shao-tsai fagau

苗栗小旅行

Miaoli Short Trip

旅行途中的借問站，是一盞令人安心、放心的明燈，座落在苗栗 18 鄉鎮市的借問站點，指引旅人穿梭在沿海鄉村中、客庄小鎮裡。有別於旅行書上記載的熱門景點，借問站的服務人員分享著他們必吃、必玩、必買的口袋名單，串起不同主題旅遊路線，就讓我們一起走進在地人的日常，創造屬於自己非比尋常的旅行回憶吧！

The Information Stations, scattered across the 18 townships of Miaoli, are like comforting beacons, guiding travelers through coastal villages and Hakka small towns. Unlike the popular spots listed in travel books, the staff at Information Stations share their own hidden gems for must-eat, must-visit, and must-buy experiences, connecting travelers with unique themed routes. Let's dive into the locals' daily lives and create extraordinary travel memories of our own!



鄉村稻田散策

Stroll Through the Rural Rice Fields

苑裡  
Yuanli

Located at the foot of Huoyan Mountain, the Yuanli Plain is a traditional rural town in Miaoli County. Strolling through the countryside, you can feel the care farmers put into cultivating organic crops. Wandering along the winding alleys, you can visit various traditional kiln sites. It's a perfect way to spend a leisurely weekend with family and friends.

Day2

- 山水米有機稻場  
Shanshuimi Organic Rice Field  
◎苗栗縣苑裡鎮玉田里 91-5 號  
No. 91-5, Yutan village, Yuanli Township, Miaoli County  
致力於推廣農食教育及有機農法，提供從插秧、趕鴨到收割等老少咸宜的田園活動，及米苔目、搗麻糬等 DIY 體驗，也可以購買有機米、黑豆茶等產品。  
Dedicated to promoting food and agricultural education and organic farming, it offers a variety of family-friendly farm activities such as rice planting, duck herding, and harvesting, along with DIY experiences like making rice noodles and pounding mochi. Visitors can also purchase organic rice, black bean tea, and other products.
- 愛情果園  
Love Orchard  
◎苗栗縣苑裡鎮豐興路 98 號  
No. 98, Wanli Rd., Yuanli Township, Miaoli County  
苑裡鎮農會的溫室果園，栽種甜椒、番茄等季節蔬果。此外，彩繪稻田團體以黃、白、紫、綠色等多色水稻，造就期間限定的稻浪美景。  
Yuanli Farmers' Association's greenhouse grows seasonal fruits and vegetables like bell peppers and tomatoes. In addition, using yellow, white, purple, and green rice varieties, the rice paddy art team creates a stunning seasonal landscape with waves of rice fields.

- 金良興觀光磚廠  
Jinliangxing Brick Factory  
◎苗栗縣苑裡鎮山腳里錦山 71-17 號  
No. 71-17, Jinshan, Shanjiadi, Yuanli Township, Miaoli County  
以紅磚文化為主題的觀光工廠，園區包含影片欣賞、文物館展示、製程導覽、磚雕 DIY 體驗、磚窯風味美食與客製化的磚情社區社遊及環境教育各類活動行程。  
A tourism factory with a red-brick culture theme. It offers film screenings, heritage exhibitions, guided tours of the production process, brick carving DIY experiences, cuisine made using brick kilns, as well as customized "Brick" community tours and environmental education.

位於火山山下的苑裡平原，是苗栗縣內傳統農村小鎮，漫步在田園間，感受農人用心栽培的有機農作，沿著巷弄蜿蜒，還可以造訪各式傳統窯場，適合與家人好友一起度過愜意的週末。

Day1

- 華陶窯  
Hwataoyao  
◎苗栗縣苑裡鎮南勢里 2 鄰 31 號  
No. 31, 2nd Neighborhood, Nanshi village, Yuanli Township, Miaoli County  
園區內有紅磚、黑瓦、木板門砌成的台灣式建築，有柴燒製成的陶藝，有綠意盎然的原生植物與生態。是一座生態保育兼容陶、窯之民俗建築，提供導覽服務、吃劃稻飯、捏陶 DIY 待君來。  
Within the park, you'll find traditional Taiwanese-style architecture built with red bricks, black tiles, wooden doors, and pottery made by wood-firing and lush native plants and ecology. It's an ecological conservation site that combines traditional pottery and kiln architecture. Visitors can enjoy guided tours, rice harvest meals, and pottery-making DIY activities.
- 稻鴨庄農場  
Duck Field Rice  
◎苗栗縣苑裡鎮泰山里 1 鄰 1 號  
No. 1, 1st Neighborhood, Taishan village, Yuanli Township, Miaoli County  
本著關懷大地環境之情，透過體驗活動、經驗分享，帶領民眾在稻鄉小學堂裡跟著農植物學習大地智慧，透過米食手作體驗感受食物的溫度，品嚐來自健康土地的豐美。  
With a deep respect for the environment, it leads participants through experiential activities and knowledge sharing. At the rice fields, visitors can learn from insects, birds, and plants, gaining wisdom from the land. Through hands-on experiences like making rice food, they can feel the warmth of food and savor the richness of produce from healthy soil.
- 享沐時光莊園渡假酒店  
Shine Mood Resort  
◎苗栗縣苑裡鎮石鎮里錦山八鄰 8-1 號  
No. 8-1, 8th Neighborhood, Jinshan, Shizhen village, Yuanli Township, Miaoli County  
坐落火山山腳下，可飽覽一望無際沖積扇平原，設有 10 間湯屋、裸湯風呂、露天風呂及戶外游泳池，可在鄉村享受泡湯的樂趣。  
Located at the foot of Huoyan Mountain, you can overlook a vast alluvial plain. There are 10 bathhouses, a nude bath, an open-air bath, and an outdoor swimming pool, allowing guests to enjoy hot springs in a rural setting.



山城老街巡禮

Tour Into the Old Streets of Mountain Towns

泰安 Ta'an 獅潭 Shitan 南庄 Nanzhuang

苗栗山城老街隱身在幽靜的小鎮上，古樸的街屋保留著歲月的痕跡，承載著當地的歷史文化與昔日繁華盛況，每條巷弄都有其獨特的韻味，讓人不禁放慢腳步，細細品味這份蘊含著濃濃客家風情或原鄉部落的古早味。

The old streets of Miaoli are tucked away in quiet mountain towns, where the ancient row houses retain traces of time. These streets carry the local history, culture, and the vibrant past of once-bustling towns. Each alley has its own unique charm, encouraging visitors to slow down and savor the rich Hakka heritage or the early tribal life of the indigenous people.

Day1

- 泰雅文物館 Atayal Museum

苗栗縣泰安鄉錦水村農畝 6 鄰 46-3 號  
No. 46-3, 6th Neighborhood, Yuanduan, Jinshui Village, Ta'an Township, Miaoli County

以泰雅族傳統圖騰及元素為主題意象，除了展示文物另有溫泉煮蛋池、泡腳池、藝文表演區及親子公園。With a theme centered on traditional Atayal tribal totems and elements, there are not only cultural exhibits but also hot spring egg-boiling pools, foot bath pools, performance spaces, and a family-friendly park.

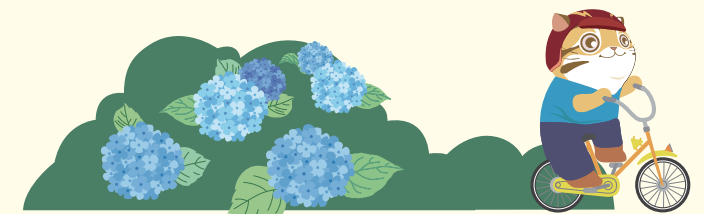


周邊景點：洗水坑豆腐街  
Recommended attraction: Xishuihung Tofu Street

- 莎力歐 SaliMu 我的家  
SaliMu B&B



屋齡近百年的山中老屋，群山溪水環繞，以款待朋友之心提供山林間的農事體驗、一泊二食及在地蔬果好物等。Surrounded by streams and greenery, it's a nearly century-old house in the mountains that offers a welcoming atmosphere for farm experiences, overnight stays with meals, and local fresh produce.



Day2

- 印象雲南食府 Yinxiang Yunnan Restaurant

苗栗縣獅潭鄉新店村 10 鄰 102 號  
No. 102, 10th Neighborhood, Xindian Village, Shitan Township, Miaoli County

以木造建築營造復古氛圍，將客家菜結合雲南菜酸辣口味，是客庄山城獨特的飲食體驗。A retro wooden building that provides a unique dining experience in Hakka mountain towns by combining traditional Hakka cuisine with the sour and spicy flavors of Yunnan cuisine.



周邊景點：獅潭新店老街  
Recommended attraction: Shitan/Xindian Old Street

- 日輝行  
Ri Hui Hang

苗栗縣南庄鄉南富村 1 鄰 26-1 號  
No. 26-1, 1st Neighborhood, Nanfu Village, Nanzhuang Township, Miaoli County

復古的舊招牌、兒時的童玩零嘴，有別於現代超商，是在地人絡繹不絕的柑仔店。A nostalgic grocery store with vintage signs and childhood snacks, offering a different experience from modern convenience stores and a place where locals frequently visit.

- 夢田莊園  
Meng Tian Manor

苗栗縣南庄鄉南富村 40 鄰 3-3 號  
No. 30-3, Xwan, Nanfu Village, Nanzhuang Township, Miaoli County

鄉村風格的歐式莊園，提供咖啡、飲品及輕食，是度過午後時光的好地方。A countryside European-style manor that serves coffee, beverages, and light meals, making it a perfect spot to spend a relaxing afternoon.



Day3

- 南庄鄉觀光產業協會

Nanzhuang Tourism Industry Association of Miaoli County



百年老郵局改建，提供南庄旅遊諮詢，在地特色伴手禮及現煮咖啡等。Renovated from a century-old post office, it provides tourism information about Nanzhuang, local specialties and freshly brewed coffee.

周邊景點：南庄老街、十三間老街  
Recommended attractions: Nanzhuang Old Street, Shisanjian Old Street

- 南江休閒農業區旅遊中心

Nanjiang Leisure Agriculture Area Visitor Center  
苗栗縣南庄鄉南江村小東河 14 鄰 8-3 號  
No. 8-3, 14th Neighborhood, Xiaodonghe, Nanjiang Village, Nanzhuang Township, Miaoli County

又被稱為「南庄的後花園」，多元化的休憩活動、農事體驗，帶領遊客與動植物近距離互動，探索休閒農業的奧秘。

Also known as Nanzhuang's Backyard Garden, it offers diverse recreational activities and farm experiences, allowing visitors to interact closely with flora and fauna while exploring the wonders of leisure agriculture.



客庄農村小旅行

Hakka Agricultural Village Tour

造橋 Zaoqiao 頭屋 Touwu 三灣 Sanwan 西湖 Xihu

跟著在地達人的推薦走進社區、探索農村，沿著小鎮上的鄉間小路漫遊，傳統農村風情與自然田園風光劃過身旁，雙腳走路、雙眼凝望、用心感受，到苗栗的客家庄、傳統農村邇達邇達，宛如回家般的愜意自在！

Day1

- 三灣梨鄉休閒農業區  
Sanwan Recreational Agriculture Park Development Association

三灣鄉北埔村 3 鄰下林坪 54 號  
No. 54, Xiaolinping, 3rd Neighborhood, Beipu Village, Sanwan Township

位居湖光山色的永和山水庫旁，擁有靜謐優美的三聯埤生態環境，以「一梨三茶」做為產業主軸，「茶」包含了苦茶油、酸柑茶及東方美人茶，光是茶就辦了吃的、喝的、玩的，讓遊客體驗不同的「茶道」。



Located near the picturesque Yongheshan Reservoir, Sanlianpi's ecological environment boasts tranquil beauty. The industries here focus on "one pear, three teas." The teas—tea seed oil, sour citrus tea, and Oriental Beauty tea—offer a rich experience of tasting, sipping, and playing about tea culture, giving visitors a distinct tea journey.



- 谷巴休閒渡假村

Valley Park Resort Hotel



以木炭為主題的渡假村提供小木屋住宿、創意 DIY 活動，園區內亦有豐富的動植物生態。A charcoal-themed resort offers cozy cabin accommodations and creative DIY activities, with a rich diversity of plant and animal life within the area.

苗栗縣造橋鄉造橋村過港坪 8-6 號  
No. 8-6, Guogangping, Zaoqiao Village, Zaoqiao Township, Miaoli County

浪花解憂之旅

竹南 Zhunan 後龍 Houlong 通霄 Tongxiao 苑裡 Yuanli

苗栗海岸線全長 50 餘公里，跨越竹南、後龍、通霄、苑裡，每一個鄉鎮都有屬於在地居民私藏的看海景點，離岸的白色風車、靜謐的無人沙灘、沿海的自行車道……邀請旅人在微微的海風吹拂中望海解憂、踏浪療癒，享受慢活的海線之旅。

Stretching over 50 kilometers, the Miaoli coastline spans Zhunan, Houlong, Tongxiao, and Yuanli. Each township has its own hidden seaside gems cherished by the locals—white offshore wind turbines, serene and secluded beaches, and coastal bikeways. Visitors are invited to gaze at the sea, unwind with the gentle sea breeze, walk along the shore, and enjoy a slow-paced coastal journey that offers relaxation and healing.

Day1

- 四方鮮乳酪故事館  
Fourways Cheese Story House

以起司為主題的觀光工廠，提供導覽解說、拔罐 DIY 及乳製品展售等。A cheese-themed tourism factory that offers guided tours, pizza DIY workshops, and dairy product displays and sales.



周邊景點：潭海森林遊憩區、崎頂車站、中港老街  
Recommended attractions: Coastal Forest Recreation Area, Qiding Station, Zhonggang Old Street

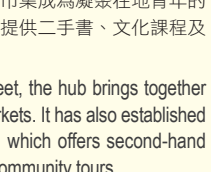
- 番社 30( 陳家古厝 )  
huansia30

建於 1937 年的閩式三合院，翻修後活化為文化場域，結合市集展覽、導覽參訪，展現傳統建築與在地文化魅力。Built in 1937, the Minnan-style sanheyuan was renovated and revitalized as a cultural venue, featuring markets, exhibitions, and guided tours to showcase traditional architecture and local cultural charm.



- 後龍灣客棧  
Houlongwan (Miaoli Bookstore)

座落在同興老街，透過聯辦市集成為凝聚在地青年的基地，並成立貓裏有機書店提供二手書、文化課程及社區導覽等。Situated on Tongxing Old Street, the hub brings together local youths by organizing markets. It has also established the Miaoli Organic Bookstore, which offers second-hand books, cultural courses, and community tours.



周邊景點：同興老街、水尾社區、後龍海灘  
Recommended attractions: Tongxing Old Street, Shuiwei Community, Houlong Beach

- 好望角蕃薯園  
Haowangjiao Sweet Potato Farm

古灶炊煙起，提供傳統農村餐食、煙寮活動及自然生態導覽解說等。The smoke rises from the ancient kiln. It offers traditional rural dining, kiln-baking activities, and guided tours of the natural ecology.



Follow local experts into the community and explore the agricultural village, wandering along the small country roads of these charming townships. Traditional rural scenery and natural landscapes unfold before your eyes, and as you walk, gaze, and fully immerse yourself in the experience. A visit to Miaoli's Hakka villages and traditional farming communities makes you feel as comfortable as coming home!

Day2

- 明德社區發展協會  
Miaoli County Touwu Township  
Mingde Community Development Association

明德水庫兩岸群山環繞，倒映在水中美如畫，並與湖中三島日新島、鴛鴦島以及海棠島相襯映美，大壩旁設有觀景橋樑，並建有廣闊的公園，南北岸各有公路環繞。



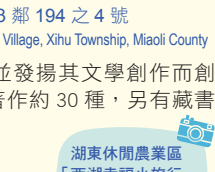
Surrounded by mountains reflected in the water, Mingde Reservoir's stunning scenery includes three islands—Rixin, Yuanyang, and Haitang. There is also a scenic bridge by the dam, an expansive park, and roads stretching along the northern and southern shores.

周邊景點：明德水庫風景區、日新島水樹榭咖啡廳、百老茶館體驗觀光工廠、賞茶三味  
Recommended attractions: Mingde Reservoir Scenic Area, Rixin Island's Shuixieloutai Coffee, Baichiaocu Tourism Factory, a Xinxin Samwei

- 吳濁流藝文館 WU ZHUO LIU Museum of Art and Literature

苗栗縣西湖鄉五湖村 13 鄰 194 之 4 號  
No. 194-4, 13th Neighborhood, Wuhu Village, Xihu Township, Miaoli County

為紀念吳濁流的貢獻並發揚其文學創作而創建；館內珍藏手稿、著作約 30 種，另有藏書約 900 餘冊及照片。The hall was established to honor Wu Chuo-liu's contributions and promote his literary works. The hall houses approximately 30 manuscripts and works, as well as over 900 books and photographs.



通霄休閒農業區「西湖咖啡小旅行」  
Xihu Happiness Tour

Day2

- 臺鹽通霄觀光園區  
Taiyen Tongxiao Tourism Park

園區設有鹽米館、溫泉泡腳區、文創園區、鹽鄉小棧及具有教育歷史意義的鹽宗雕像等豐富有趣的遊玩設施。The park features attractions such as Taiyen Museum, Ocean Foot Spa, a cultural and creative park, Taiyen Biotech sales center, and a Salt Ancestor Statue with educational and historical significance.



周邊景點：日落大道  
Recommended attractions: Sunset Boulevard

- 福堂餅行  
Fu Tang Bakery (Tongxiao headquarter)

苗栗縣通霄鎮中正路 1-3 號  
No. 1-3, Zhongzheng Rd., Tongxiao Township, Miaoli County

周邊景點：龍巖公車站、南邊海地  
Recommended attractions: Totoro Bus Stop, Nantong Sea Dike

- 東里家風百年古厝  
Dong Li Jia Feng Historic House

苗栗縣苑裡鎮苑坑裡 2 鄰 8 號  
No. 8, 2nd Neighborhood, Yuankeng village, Yuanli Township, Miaoli County

傳統閩氏一條龍古厝，以山為師，以海為鄰，提供料理、小農產品、體驗課程等。A traditional Minnan terraced house, nestled in the mountains and by the sea. It offers culinary experiences, local farm products, and hands-on workshops.



- 心離居 Xindiaoju

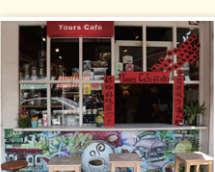
苗栗縣苑裡鎮西平里出水路 64 號  
No. 64, Chushui, Yuanli Township, Miaoli County

傳統閩氏一條龍古厝，以山為師，以海為鄰，提供料理、小農產品、體驗課程等。A traditional Minnan terraced house, nestled in the mountains and by the sea. It offers culinary experiences, local farm products, and hands-on workshops.



- 苑裡好咖 Yuanli Cafe

自家烘焙咖啡飄香老屋，招牌餐食包含肉桂捲、昆尼麵包、千層餅及結合在地特色的魚丸拔罐。An old house filled with the aroma of homemade roasted coffee, where signature dishes include cinnamon rolls, butt-shaped bread, lasagna, and fishball pizza with a local twist.



- 王記鑫魚丸  
Wang Ji Xin Fish Ball

苗栗縣苑裡鎮和平路 78 號  
No. 78, Heping Rd., Yuanli Township, Miaoli County



親子樂遊花果香

Family Fun in the Fragrance of Flowers and Fruits

大湖 Dahu 卓蘭 Zhuolan

「草莓之鄉」大湖、「水果王國」卓蘭是苗栗許多農特產的著名產地，無論是春夏的賞花季、秋天賞楓葉、冬天挖薑採草莓，配合季節賞花、採果，都讓小朋友玩得樂不樂乎，還可以參加在地人特別規劃的食農教育，寓教於樂的方式讓親子同樂。

Dahu, known as the Township of Strawberry, and Zhuolan, known as the Fruit Kingdom, are famous for their agricultural products in Miaoli. Whether it's the flower-viewing season in spring and summer, maple leaf watching in autumn, or ginger digging and strawberry picking in winter, these activities bring joy to both kids and adults. Visitors can also participate in locally designed food and agricultural education programs, offering an enjoyable way for families to learn while having fun.

Day1

- 巧克力雲莊  
Schokolade

台灣唯一整合自可可產地製作、研發生產到通路銷售的巧克力專業工廠，提供各式美味高品質的巧克力、甜點與蛋糕。The only professional chocolate factory in Taiwan that integrates everything from cocoa farm contracts to research, production, and sales. It offers a variety of delicious, high-quality chocolates, desserts, and cakes.



周邊景點：出雲古蹟  
Recommended attraction: Chuyun Historic Trail

- 大湖酒庄  
Dahu Wineland Resort

亞洲第一個草莓酒製酒產地，內有大湖草莓文化館、農特產品展售區販售多樣化的草莓周邊商品。The first strawberry wine-making site in Asia. It includes the Dahu Strawberry Cultural Center and an agricultural specialty exhibition area that sells a variety of strawberry-related products.



周邊景點：社寮角金針花廊道  
Recommended attraction: Sheliagiao Daylily Embankment

- 十分嶼老茶亭  
Shifendong Tea House

建於 1923 年，是昔日步道往來休憩點，現為苗栗縣定古蹟。Built in 1923, it was once a rest stop along a historic trail and is now Miaoli's designated historic site.



- 楓葉地圖民宿  
Maple Map Café

苗栗縣大湖鄉東興村上湖 108 號  
No. 108, Shanghu, Dongxing Village, Dahu Township, Miaoli County



- 薑麻園旅客服務中心  
Jiangmayuan Visitor Center

海拔約 500-800 公尺，是生薑的產地，日夜氣溫變化大，因此常出現雲霧繚繞的美景。At an altitude of 500-800 meters, it is known for its ginger production. The significant day-night temperature difference often creates beautiful misty landscapes.



- 花露農場  
Hualu Farm (Flower Home)

以四季花卉、城堡民宿、天然精油、精緻餐點與玫瑰花淇淋著名，園區處處散發著療癒花香。Famous for its seasonal flowers, castle-like guesthouses, natural essential oils, gourmet dishes, and rose ice cream, the entire park is filled with the therapeutic scent of flowers.



- 江記永安囍餅店  
Jiang Ji Yung An Wedding Cake

30 餘年遵循古法製餅，以人工方式將油酥包進油皮，讓每一塊餅的背後，散發出真誠的手感溫度。For over 30 years, it has followed traditional methods to make pastries, manually folding layers of oil dough into the water dough and infusing each pastry with the warmth and sincerity of craftsmanship.



周邊景點：卓蘭四水果金剛  
Recommended attraction: Zhuolan's Four Great Fruit Transformers

藝文陶冶行旅

Artistic and Cultural Journey

三義 Sanyi 銅鑼 Tonglue 公館 Gongguan

三義的木雕、公館的陶藝遠近馳名，當藝文場館化身為借問站，不僅在旅人們一次次的「借問一下……」，無形中將苗栗以最藝術的方式行銷各地，到訪的旅人也能透過藝文工作人員的介紹，增加旅遊的品質與文化內涵。

Sanyi is renowned for its wood carving, and Gongguan for its pottery. As travelers ask for directions at art venues, which also serve as Information Stations, Miaoli's artistic charm is also introduced to the world. Through the introductions provided by art professionals, visitors can enrich both the quality and cultural depth of their experiences.

Day1

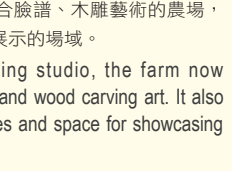
- 月台茶棧  
Yuetai Tea House

位於勝興車站月台旁，提供客家菜餚、茶點及描茶體驗，國內外旅客皆為之風靡。Located next to the platform of Shengxing Station, it offers Hakka cuisine, snacks, and a ground tea experience that fascinates both domestic and international tourists.



- 山板樵臉譜文化生活館  
Shan Ban Ciao Mask Cultural Village

從木雕工作轉型為結合臉譜、木雕藝術的農場，並提供彩繪體驗、作品展示的場域。Formerly a wood carving studio, the farm now combines facial makeup and wood carving art. It also offers painting experiences and space for showcasing artworks.



- 世奇精緻餅店  
ShihChi Art Cake

苗栗縣三義鄉水美路 156 號  
No. 156 Shumei Rd., Sanyi Township, Miaoli County



三義甘丹民宿  
Gandan B&B

苗栗縣三義鄉雙湖 7-11 號  
No. 7-11, Shuanghu, Sanyi Township, Miaoli County



台式復古漫旅

Taiwanese Retro Journey

苗栗 Miaoli 頭份 Toufen

時光荏苒，昔日的建築與文化為在地留下點點滴滴的記憶，旅人循著借問站的指引，踏上舊時光隧道、住進一甲子的老旅社、走入三百年歷史的老社區，細細感受懷舊老派的台式浪漫；再跟著職人的專業，把一本冊子把這份回憶收藏、啜一口茶或咖啡，為旅行增添台灣暖心的溫度。

As time passes, the buildings and culture of the past leave behind precious memories for the local community. Following the guidance of information stations, travelers can step into a time tunnel, stay in an old inn that has stood for six decades, or explore a 300-year-old neighborhood, all while savoring the nostalgic, old-fashioned charm of Taiwanese romance. Under the guidance of professionals, travelers can create their own booklet to preserve these memories, sip tea or coffee, and experience the warmth of Taiwan's hospitality along the way.

Day1

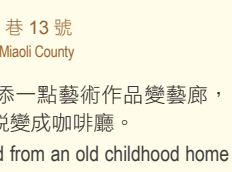
- 來本冊子 Re:mainer Handcrafts Books

將手工書技藝融入日常生活，運用不同的布、縫法、紙張製作具特色的冊子。Handcrafting skills are woven into everyday life, with unique booklets made using different fabrics, stitching techniques, and paper.



- 老家藝文生活空間  
Laojia Art Space

將小時候生活的老家添一點藝術作品變藝廊，再加一點飲品、甜點蛻變成咖啡廳。An art gallery transformed from an old childhood home with a touch of art and a coffee shop offering drinks and desserts.



- 新興旅社  
Hsin Hsin Hotel

苗栗縣苗栗市建國街 3 號  
No. 3, Jianguo St., Miaoli City, Miaoli County



Day2

- 三義木雕博物館 Sanyi Wood Sculpture Museum

苗栗縣三義鄉廣盛村廣盛新城 88 號  
No. 88, Guangsheng Xincheng, Guangsheng Village, Sanyi Township, Miaoli County

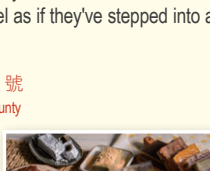
於 1995 年開館，以發揚木雕藝術為目標，展示傳統、當代等木雕作品，並辦理創作營、互動體驗等。Established in 1995, it is dedicated to promoting wood carving art, displaying both traditional and contemporary works, and hosting workshops and interactive activities.



- 姜太太中郎道場 - 客家大院 ( 桐花公園 )  
Hakka Courtyard Jiang Taigong Central Daochang (Tung Blossom Park)

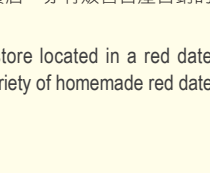
苗栗縣銅鑼鄉龍泉 15 號  
No. 15, Longquan, Tonglue Township, Miaoli County

每年 4-5 月園區內桐花盛開，為客家大院增添一抹白霜露的色彩，彷彿置身於雪之國度。Each year from April to May, it is adorned with blooming tung flowers, adding a snowy white hue to the Hakka courtyard, making visitors feel as if they've stepped into a snow-covered kingdom.



- 阿財米食  
shao-tsai fagau

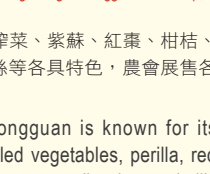
傳承近 50 年，堅持手作，推廣傳統客家米食，傳承經典風味創造新可能。With nearly 50 years of heritage, we uphold handmade craftsmanship, promote traditional Hakka rice delicacies, and blend classic flavors with new possibilities.



- 濟仁商店  
Jiren Grocery Store

苗栗縣公館鄉石碼村 8 鄰 176 號  
No. 176, 8th Neighborhood, Shijie Village, Gongguan Township, Miaoli County

位於紅棗產地的古早味雜貨店，亦有販售自產自銷的紅棗系列產品。An old-fashioned grocery store located in a red date production area. It sells a variety of homemade red date products.



Day3

- 公館鄉農會  
Gongguan Farmers' Association

以農為本的公館，福菜、榨菜、紫蘇、紅薑、柑桔、牛心柿、芋頭、桑槲、薑絲等各具特色，農會販售各式農特產。Rooted in agriculture, Gongguan is known for its preserved vegetables, pickled vegetables, perilla, red dates, oranges, persimmons, taro, mulberries, and silk, with the Farmers' Association offering a range of these local specialties.



- 美之味農產企業社 ( 阿娘伯 )  
A Huan Bo Food Company

傳承一甲子的醃漬技術，提供福菜、金桔醬、紫蘇梅及豆腐乳等。With over 60 years of pickling expertise, it offers products such as preserved vegetables, kumquat paste, perilla plums, and fermented bean curd.



- 五穀文化村陶瓷觀光工廠  
Wugu Cultural Village Pottery Tourism Factory

苗栗縣公館鄉玉穀村 117-5 號  
No. 117-5, Yugu Village, Gongguan Township, Miaoli County

1985 年創建至今，從一座陶藝工場擴建成生產陶瓷、外銷的工廠。開放參訪、體驗活動、藝術家創作平台。



- 仁安社區發展協會  
Ren'an Community Development Association